

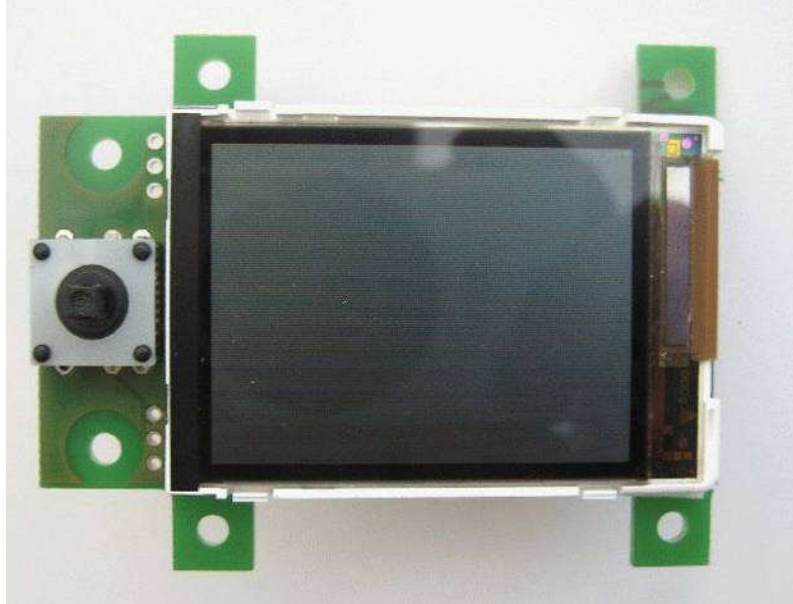
Race Diagnostics Ltd

LiquidPassat Mk5 Kit Assembly Manual



Kit components

The liquidPASSAT kit contains the following items:



Tools and components required to complete the assembly (not included in the kit).

Hot glue or silicone gun

Take care to use a suitable glue for the climate you will use the unit in. Hot melt glue has the advantage of being reversible if is desired to change the fascia or/lcd module etc. and is fast to set. Silicone may have a wider temperature durability but take a long time to set.

Pliers

Modified PASSAT air vent, disassembled, this is not included with he kit.



WARNING – ESD PRECAUTIONS MUST BE USED DURING THE KIT ASSEMBLY

The liquidPASSAT PCB must be handled very carefully as it can easily be damaged by static electricity discharges.

Do not remove the PCB from its protective ESD bag. Before handling the PCB be sure to ensure that both yourself and the tools you plan to use are fully discharged. For example by touching an earthed item within your planned work area.

Kit conditions of sale:

Before assembling the liquidPASSAT kit, the purchaser must first test the pcb.

- 1) Keeping the PCB in the protective anti static bag, take it and the OBD2 cable to your Passat.
- 2) Remove the pcb from the antistatic bag, holding it only by its edges and plug in the 9 pin OBD2 cable to the pcb.
- 3) With the engine off, plug in the other end of the OBD2 cable to the PASSAT diagnostics port.
- 4) Turn on the ignition, there is no need to start the engine. The liquidPASSAT should start to fully function.
- 5) Unplug the liquidPASSAT and replace in the antistatic bag.

If there is any problem at this stage, then return the PCB to Race diagnostics in its original packaging for a replacement.

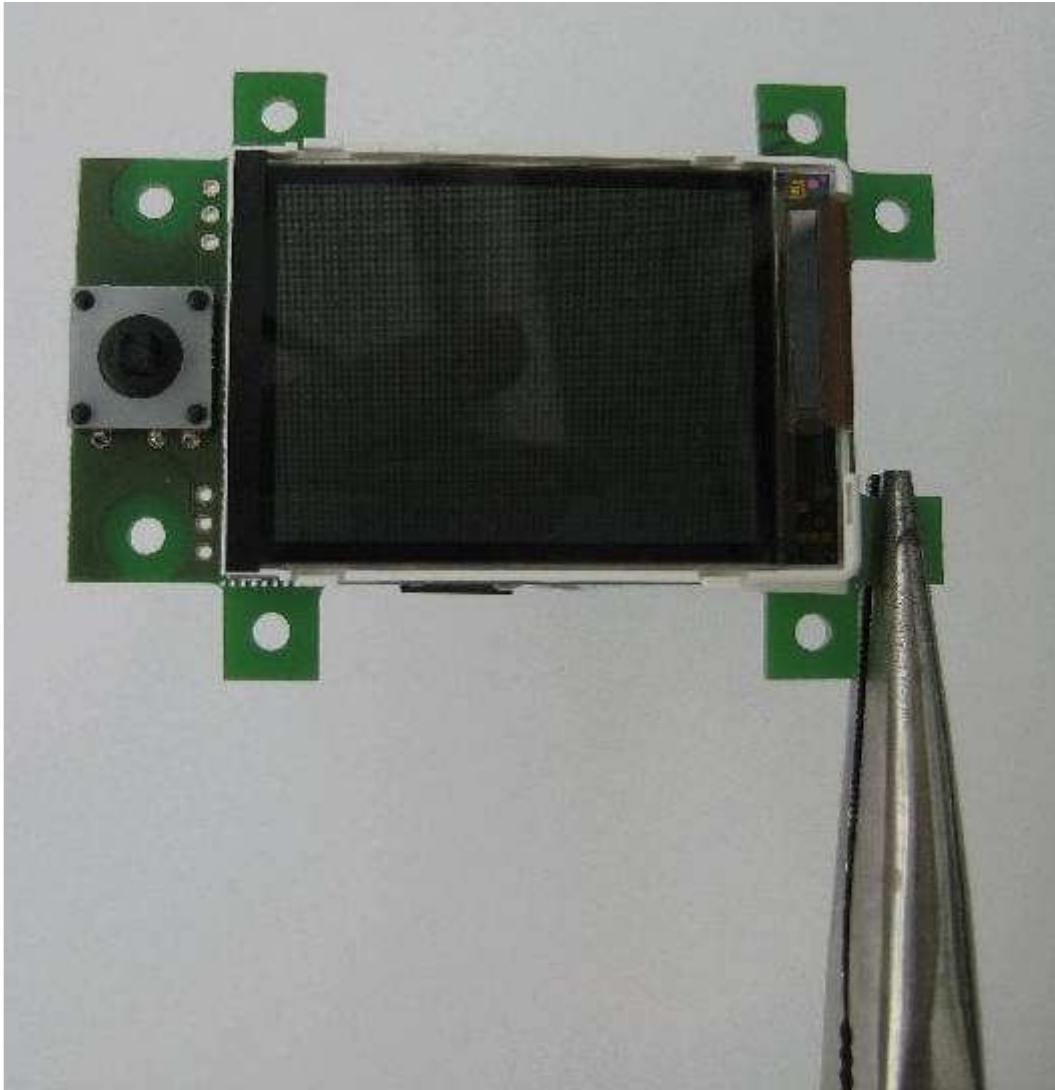
If a problem is reported after the KIT has been assembled there will be a minimum £100+postage and packing fee to pay for a rework of the unit.

If you are not confident of your abilities to assemble the kit, then either purchase the exchange unit or complete assembled product.

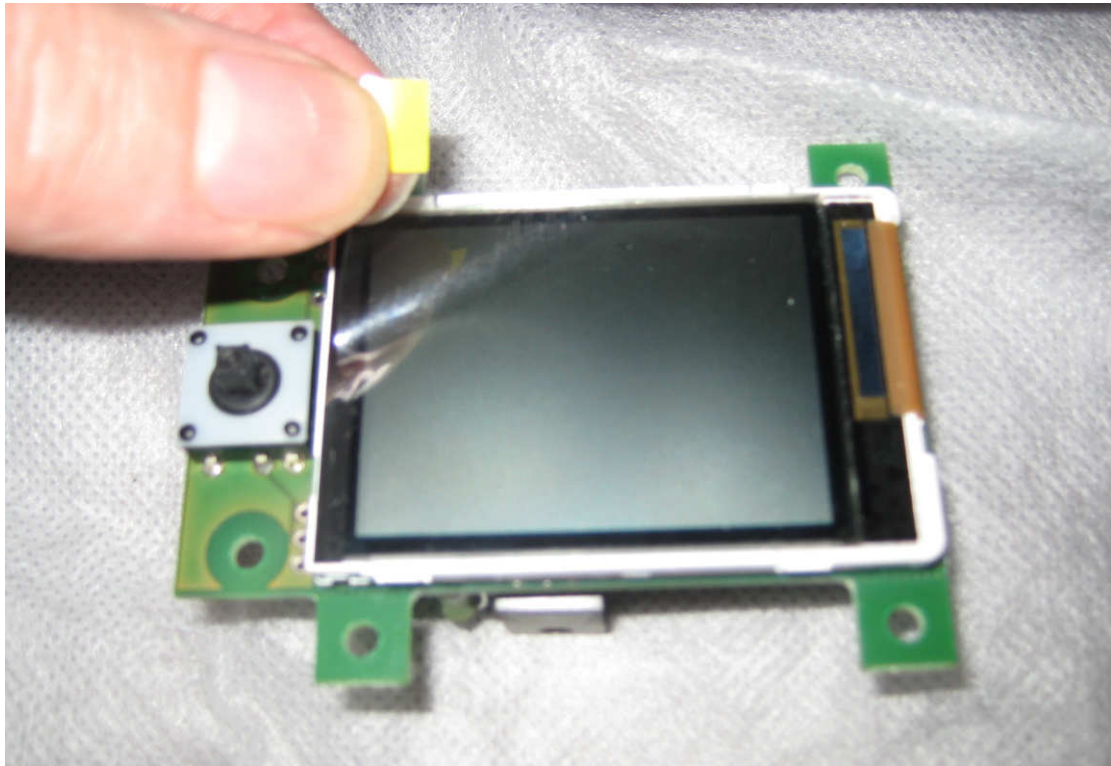
Assembly instructions

Depending upon the fit of your modified vent mounting you may need to snap off one or more of the mounting lugs from the PCB.

This should be done with a large pair of pliers and must be carried out extremely carefully to ensure that neither the PCB or LCD are damaged.



Next the protective film should be removed from the face of the LCD.



Next, remove the flap which regulates the air flow through the vent by carefully levering out.

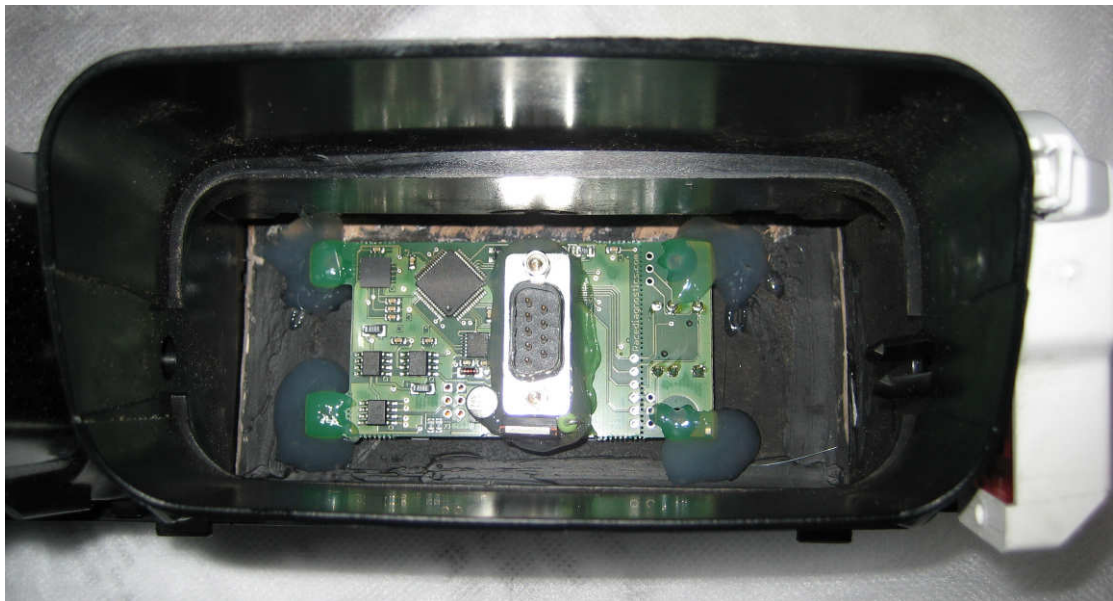
Then carefully position the PCB into the vent and check from the front that the alignment is correct.



Next check the alignment of the screen with the opening and the joystick position.



Once you are happy that the display is positioned correctly, use the hot glue gun to glue each of the four pcb retaining tabs into the vent as shown below.

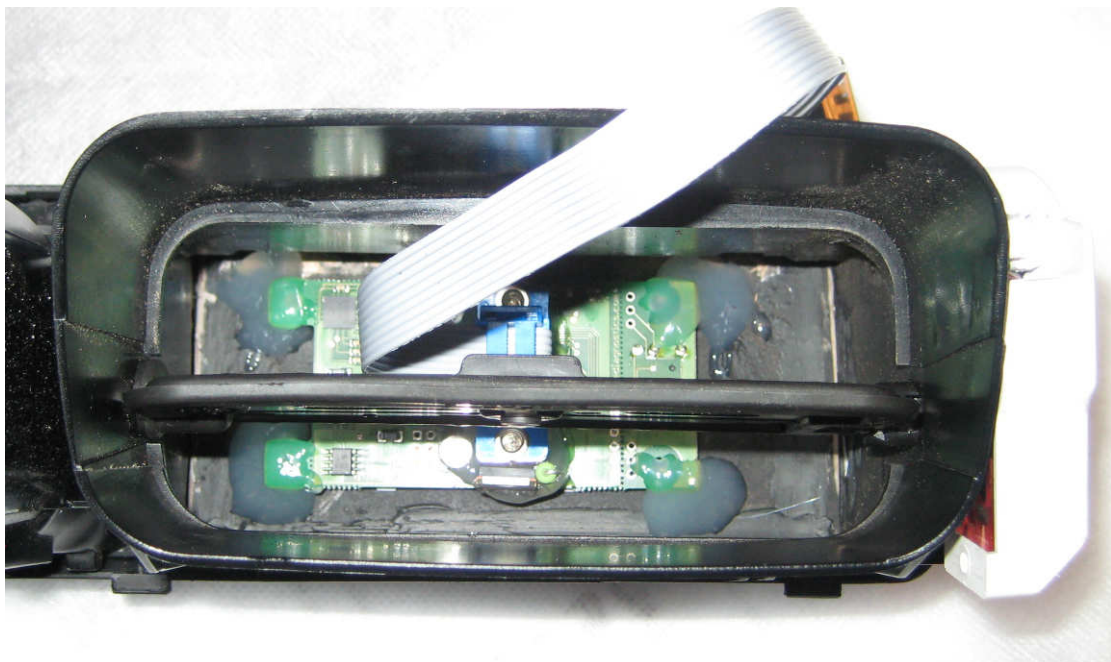


Before the glue is set hard, check the alignment of the screen and joystick.

Once the glue has hardened after a few minutes the short ribbon adaptor cable should be attached.



Next, replace the air vent flap. The side cover of the vent may need to be removed to do this.



Ensure the flap is in the closed position before refitting to the car to protect the PCB from excessive hot air.



The liquidPASSAT kit assembly is now complete.

