

Race Diagnostics Ltd

LíquidIBIZA MK5 Kit Assembly Manual

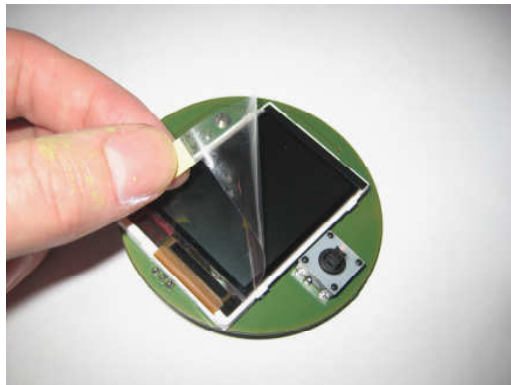
Required components

The liquidIBIZA Mk5 kit contains the following items:

One Black Aluminium facia.

One liquidIBIZA Mk5 pcb

See pictures below.



Tools and components required to complete the assembly (not included in the kit).

Hot glue and acid free silicone and gun.

Take care to use a suitable glue for the climate you will use the unit in.

Hot melt glue has the advantage of being reversible if is desired to change the fascia or/lcd module etc. and is fast to set.

Silicone may have a wider temperature durability but take a long time to set.

A 2 part epoxy glue is not recommended as repairs will be virtually impossible.

We use this non acidic silicone for assembly at RaceDiagnostics ;

Unibond No More Nails Ultra Power 1019744

WARRANTY NOTICE

USE OF ANY GLUE OTHER THAN HOT MELT GLUE OR ACID FREE SILICONE WILL INVALIDATE YOUR WARRANTY DUE TO THE DIFFICULTY TO DISMANTLE THE UNIT.

Masking tape.

Dermel type tool.

Hack saw.

Ibiza Mk5 air vent, disassembled and prepared.

WARNING – ESD PRECAUTIONS MUST BE USED DURING THE KIT ASSEMBLY

The liquidIBIZA Mk5 PCB must be handled very carefully as it can easily be damaged by static electricity discharges.

Before handling the PCB be sure to ensure that both yourself and the tools you plan to use are fully discharged. For example by touching an earthed item within your planned work area.

Kit conditions of sale:

Before assembling the liquidIBIZA Mk5 kit, the purchaser must first test the pcb.

- 1) Keeping the PCB in the protective anti static bag, take it and the OBD2 cable to your car.
- 2) Remove the pcb from the antistatic bag, holding it only by its edges and plug in the cable to the pcb.
- 3) With the engine off, plug in the other end of the OBD2 cable to the OBD2 diagnostics port.
- 4) Turn on the ignition and start the engine. The liquidIBIZA Mk5 should start to fully function.
- 5) Unplug the liquidIBIZA Mk5 and replace in the antistatic bag.

If there is any problem at this stage, then return the PCB to Race diagnostics in its original packaging for a replacement.

If a problem is reported after the KIT has been assembled there will be a minimum £100+postage and packing fee to pay for a rework of the unit.

If you are not confident of your abilities to assemble the kit, then either purchase the exchange unit or complete assembled product.

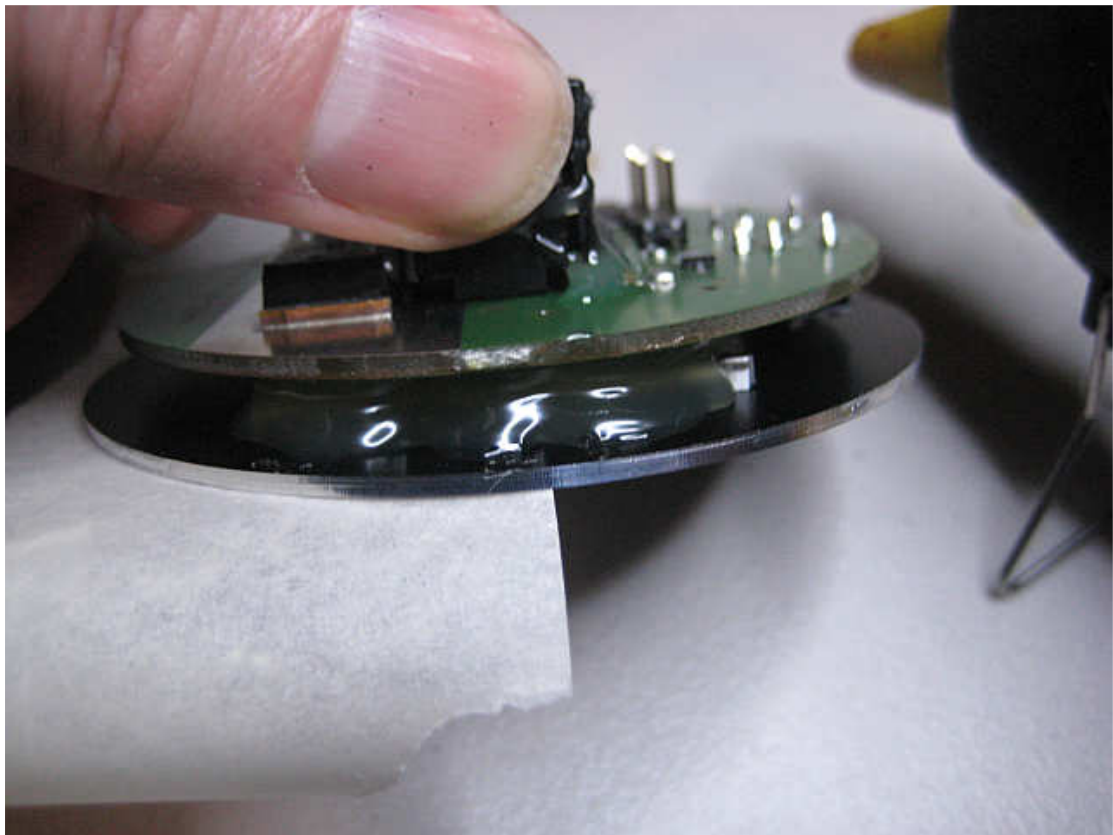
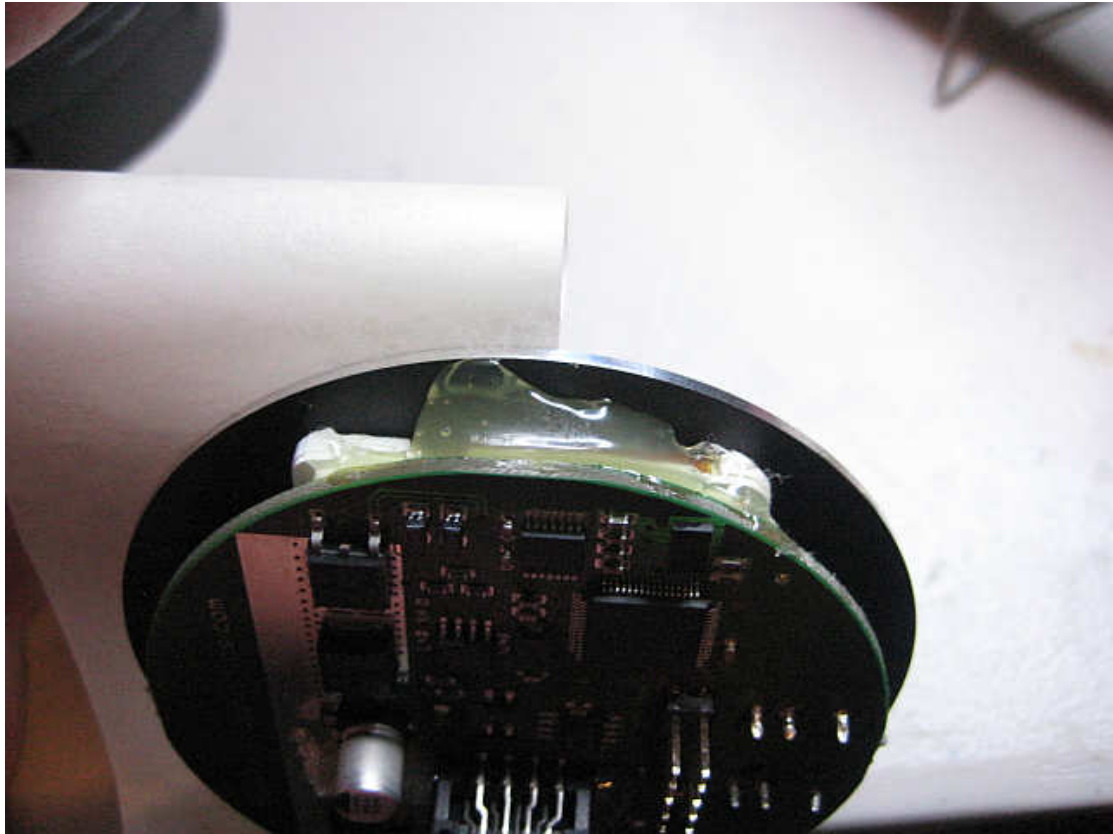
Please note that assembling the kit using epoxy glue will invalidate your warranty. In addition, if the 10 pin header area on the PCB is obstructed by glue, this will also invalidate your warranty.

Assembly instructions

First the pcb needs to be attached to the fascia. Align the pcb with the fascia and once correct, hold in place using masking tape.



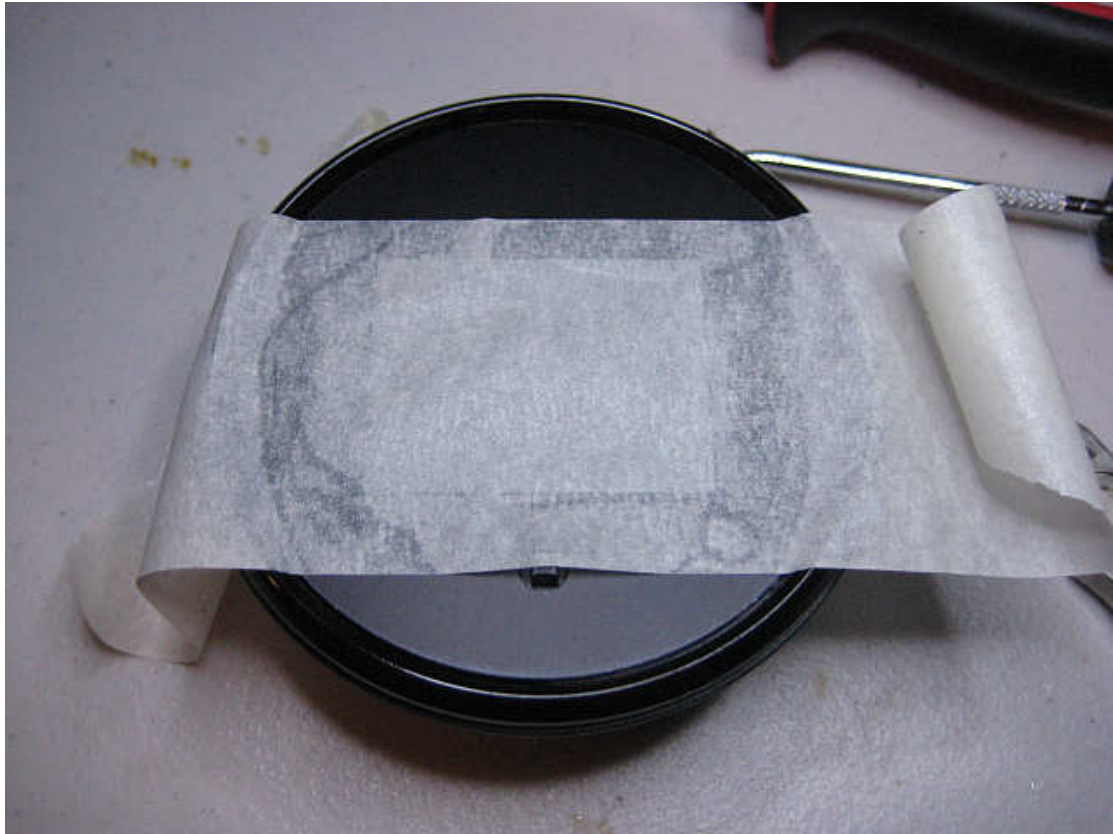
Next use a hot glue gun to tack the pcb to the fascia on two sides.



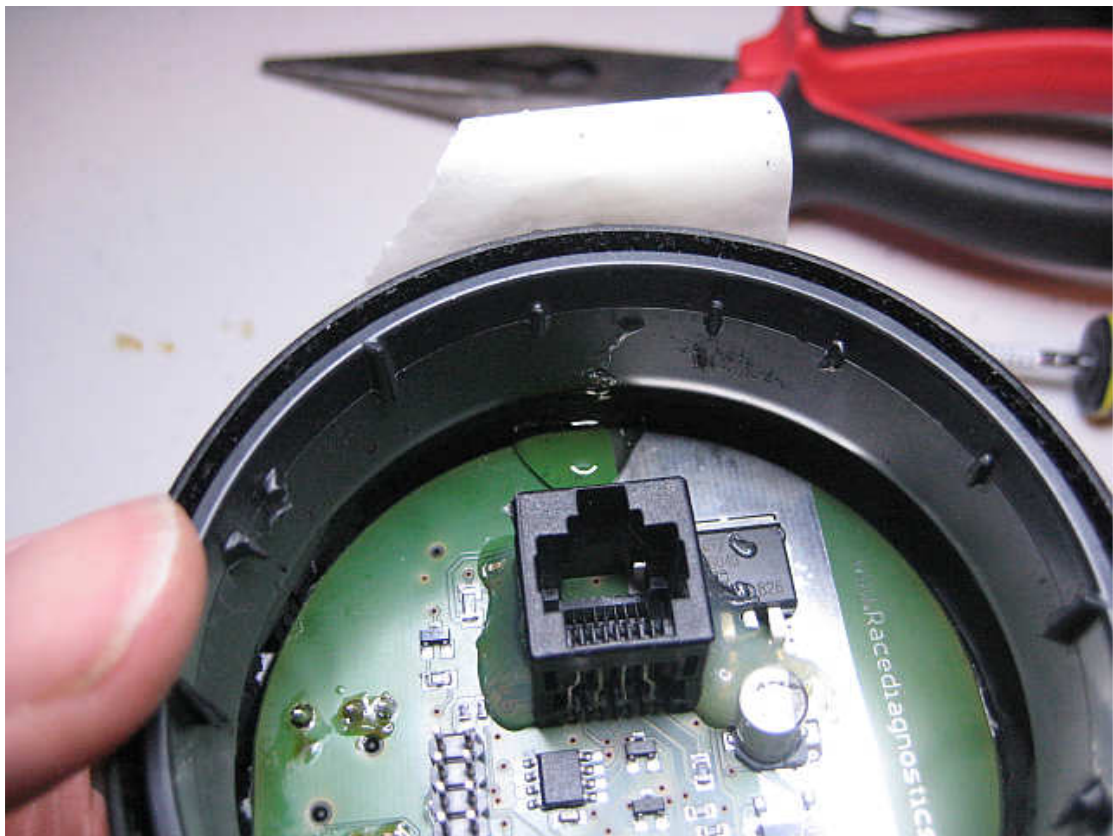
Once this has hardened fix the other two sides using the silicone glue, taking care not to get glue on the joystick.

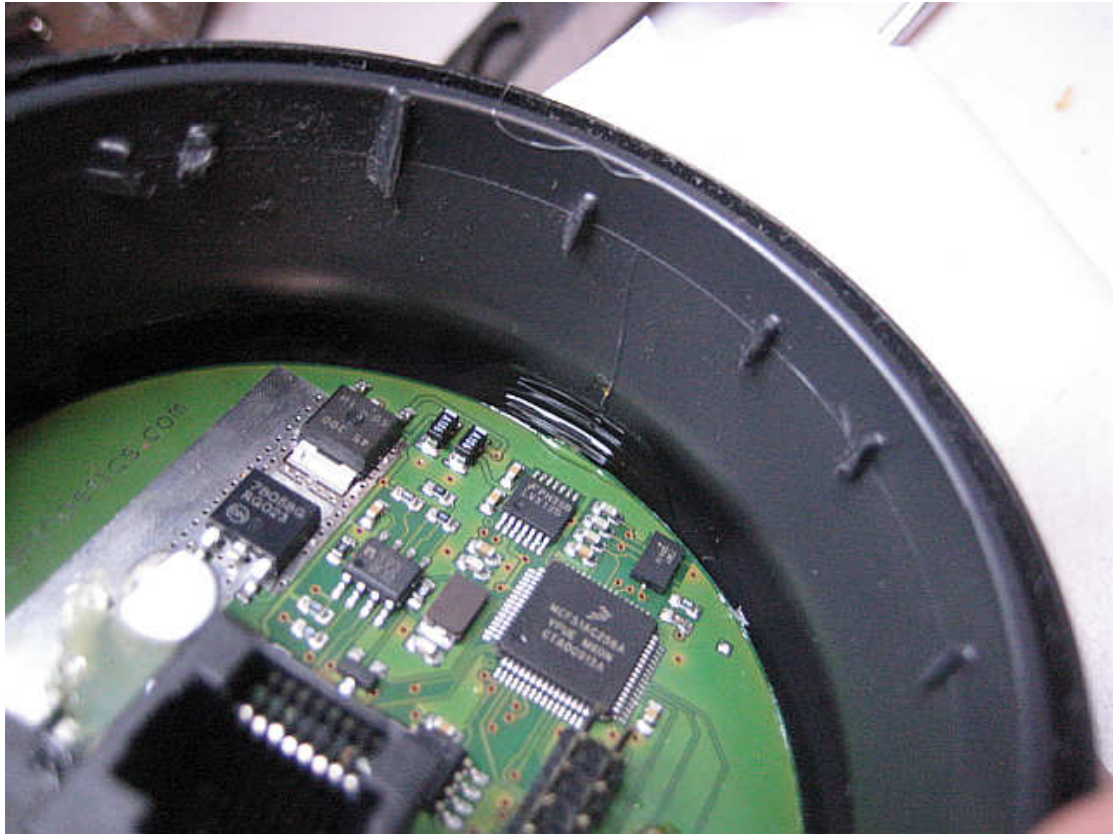


Next place the fascia into the vent, centre it and then hold in place using masking tape.



Tack the pcb in to place using heat glue in two places.





Once hardened, fix in place using the silicone glue.





The assembly is now complete, leave overnight for the glue to fully cure.



Appendix 1 – Ibiza Mk5 Air vent disassembly

First remove the two flaps from the front of the vent by pulling with your fingers or pliers.



Next remove the outer lip of the vent, use some fine pliers or snips to gently squeeze the clips so the surround can be removed.



Work your way round all of the clips.



Eventually to will come free.



Next remove the honeycomb at the rear.





Next the front of the vent needs to be prepared by sanding off the two protruding lugs. I used a belt sander for this but they could be cut off with a hacksaw.



Next the lug depth on both sides needs to be reduced to allow the PCB to fit, use a dremel type tool to do this.



The vent is now ready.